

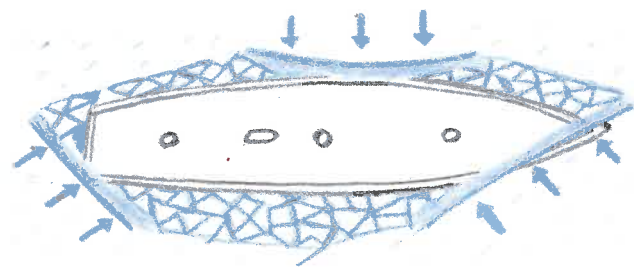
PRESSURE



Another roaring blizzard heaved the ice into a maze of **hummocks**, and as the pressure around the ship continued to grow, the crew realised they might have to escape at any minute.



Intense pressure on all sides began to push the ship up out of the water. By October, Endurance was tilted at a 30-degree angle, and still the ice showed no mercy.



Finally, the ship began to crack as it was twisted out of shape. A loud bang was heard and water flooded in. Luckily, McNeish managed to fix the dangerous leak, but conditions continued to worsen.



With pressure ridges rising all around them, Shackleton reviewed his plans to evacuate the ship, which was being crushed from all directions.

